

# Community mapping and quality assurance for urban disaster mapping

**Sanghoon Lee, Ph.D.**

Team Leader for International Cooperation and Standard  
National Geographic Information Institute(NGII)  
Republic of Korea



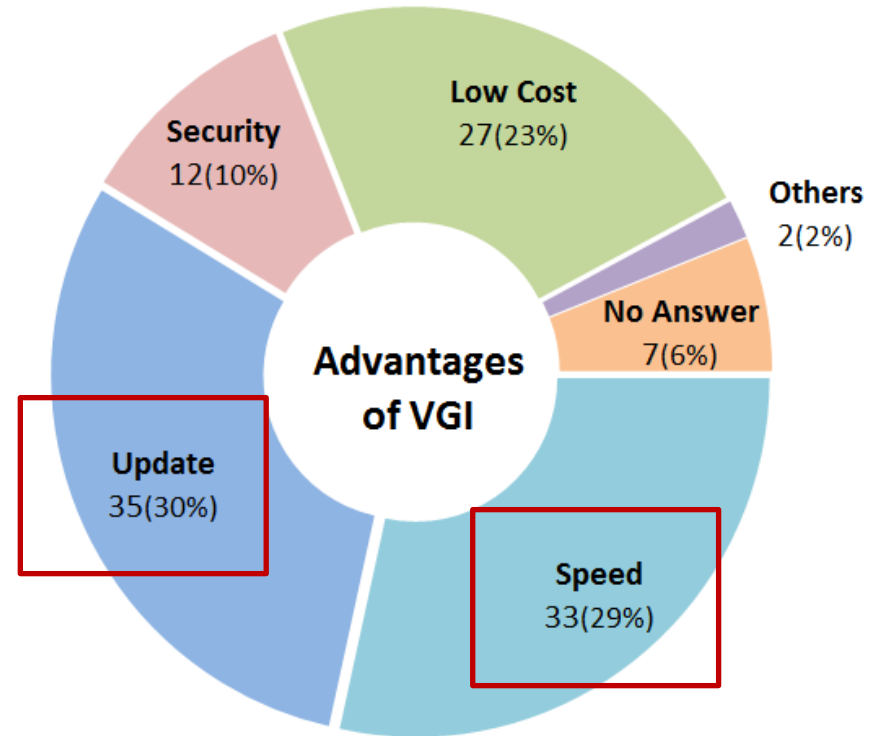
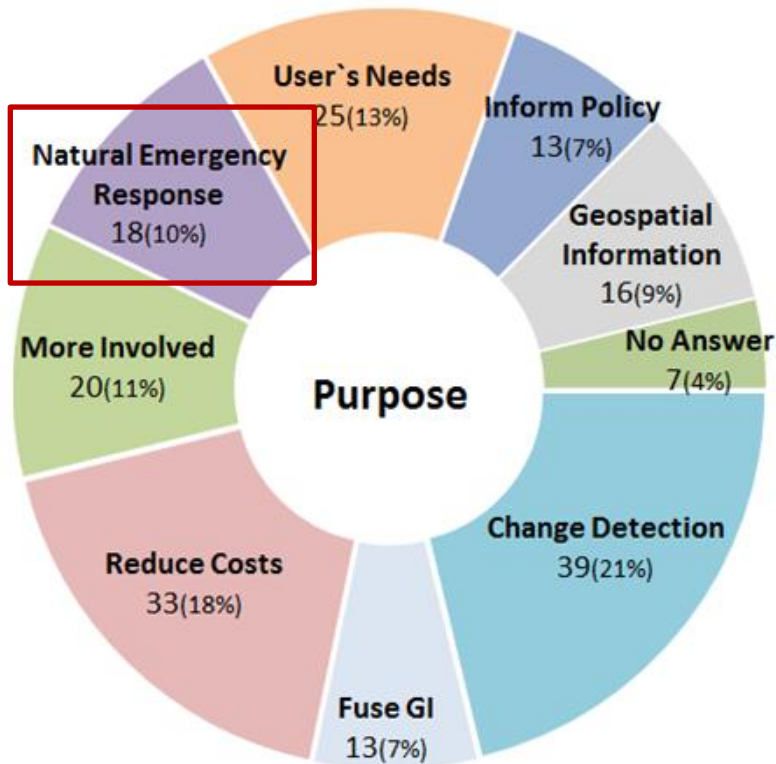
UN-GGIM

United Nations Committee of Experts on  
Global Geospatial Information Management

*Positioning geospatial information to address global challenges*

[ggim.un.org](http://ggim.un.org)

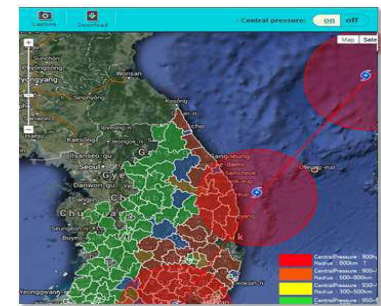
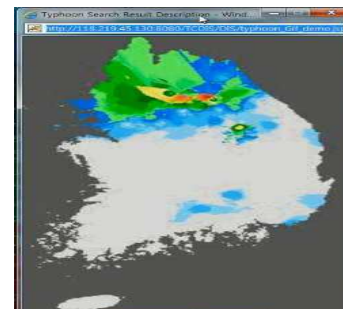
# What Do We Think about VGI ?



# Needs for Urban flooding and response

- Need to quickly update contextual information for response
- Consider local characteristics about disaster vulnerability through Geo-portal for DM
- Relationship between VGI and authorized base map in tackling the quality concerns

The screenshot shows the 'Typhoon Committee Disaster Information System' website. It features a navigation bar with 'TC WG DRR', 'TCDIS', and 'Disaster Information'. A login section includes 'Log-in' and 'Log-in' buttons. A 'News & Notice' section contains several news items about Typhoon Maemi ravaging South Korea. A map of East and Southeast Asia is displayed on the right. The footer includes the copyright notice: 'COPYRIGHT ©2013 ESCAP/WMO TYPHOON COMMITTEE WORKING GROUP ON DISASTER PREVENTION AND PREPAREDNESS'.



This screenshot shows a GIS application interface. It features a map on the left with a blue circle highlighting a specific area. On the right, there are several data tables and a 'SPHERES' window. The interface is in Korean and includes various navigation and data management tools.



UN-GGIM

United Nations Committee of Experts on  
Global Geospatial Information Management

Positioning geospatial information to address global challenges  
ggim.un.org

# Practical Use-case for Urban Flooding

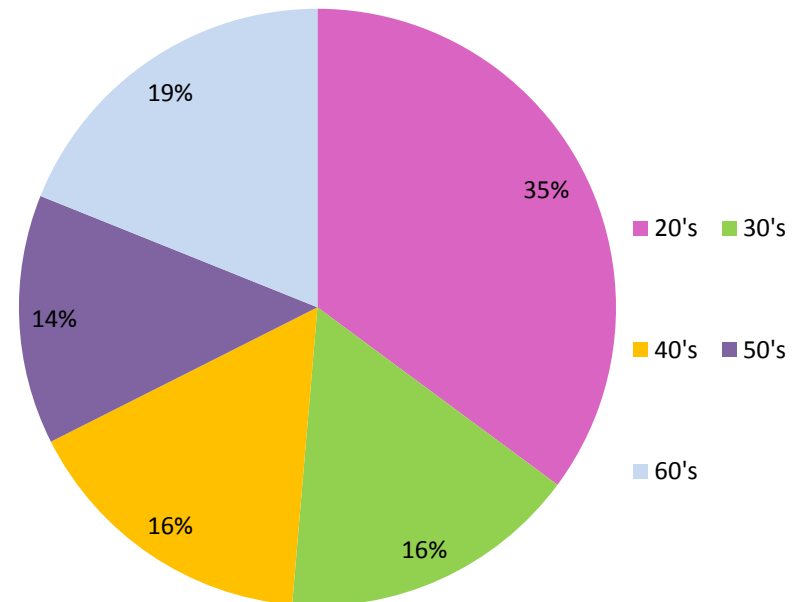
Mapping  
Region  
&  
Method



Mapping  
Result



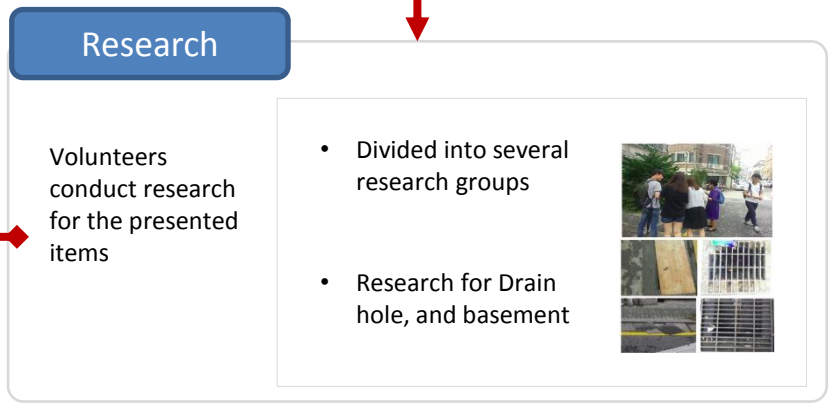
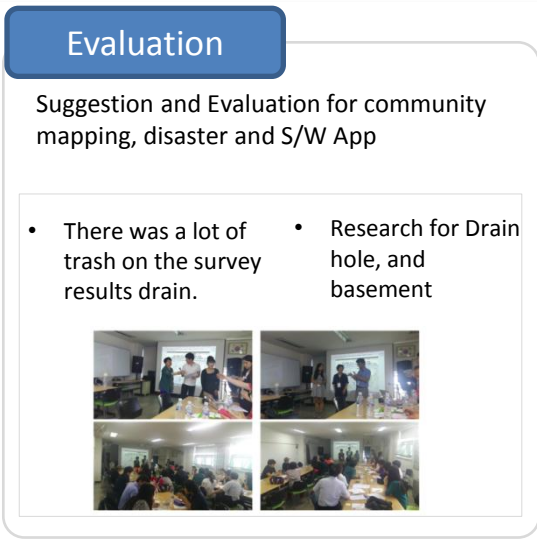
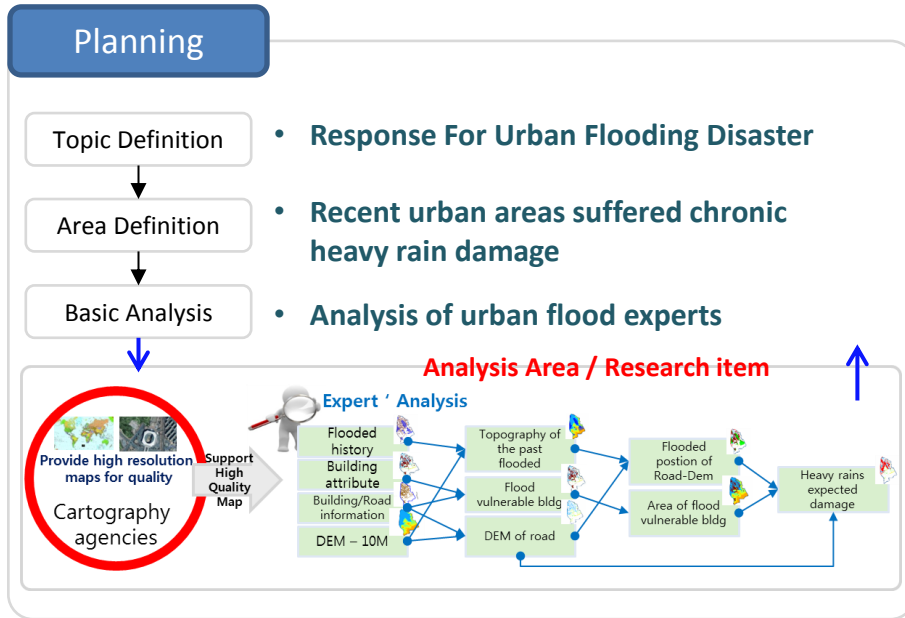
Age distribution (55 persons)



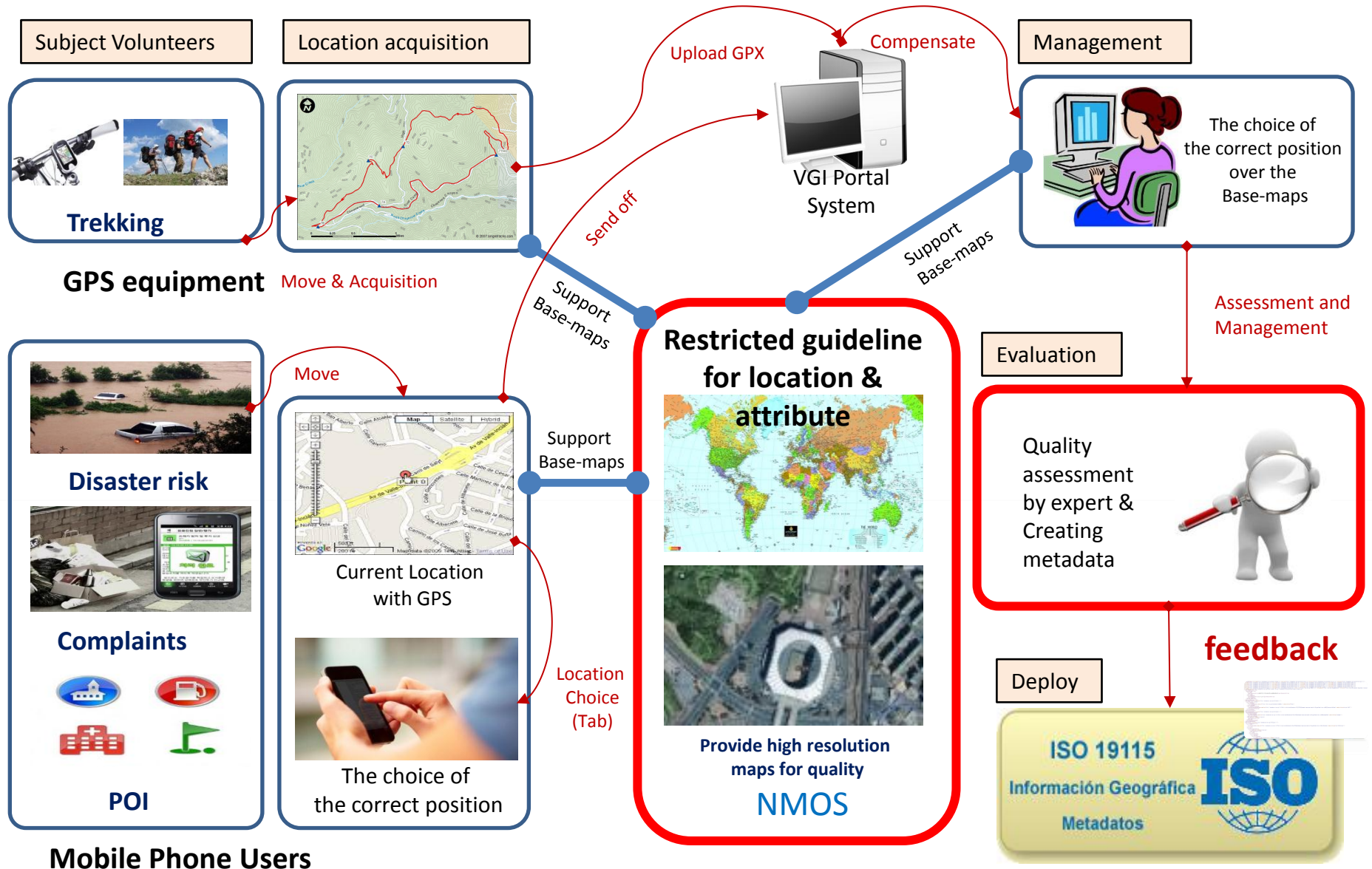
Mapping  
Results  
Discussion



# Community Mapping Process

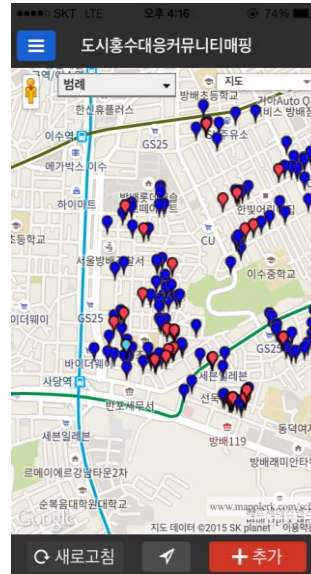


# Quality Assurance Process



# Implication of Community Mapping

- Collect lots of field data in a short period
- Varied participants and possible mapping with training and supported by NMOs
- Quality is not high, but speedy and varied data
- Generate practical and creative response strategy



# What Do We Do ?

- Understand from ordinary people's geospatial experience and expectations
- Raise geospatial awareness and capacity with trained community
- Stimulate stakeholder group's participation and contribution
- Provide a transparent link between ordinary people and NMOs





# Thank you !

Sanghoon Lee  
sanghoon.lee@korea.kr



UN-GGIM

United Nations Committee of Experts on  
Global Geospatial Information Management

[ggim.un.org](http://ggim.un.org)